

# South Gloucestershire Landscape Character Assessment

## Annex II: Strategic Viewpoints

### South Gloucestershire Council

**Final Draft Report for Adoption Chapter 16**

Prepared by LUC

September 2024



Version	Status	Prepared	Checked	Approved	Date
1	Draft Method and Pilot	E White L Jewitt	K Davies	K Davies	03.04.2023
2	Draft Report	L Jewitt V Kakar	E White	K Davies	16.05.2023
3	Draft Report	E White L Jewitt	E White	K Davies	14.07.2023
4	Final Draft	E White L Jewitt	E White	K Davies	01.11.2023
5	Final Draft (updated following New Local Plan Phase 3 consultation)	L Jewitt	E White	K Davies	12.06.2024
6	Final Draft Report for Adoption	L Jewitt	E White	K Davies	11.09.2024



**Land Use Consultants Limited**

Registered in England. Registered number 2549296. Registered office: 250 Waterloo Road, London SE1 8RD. Printed on 100% recycled paper

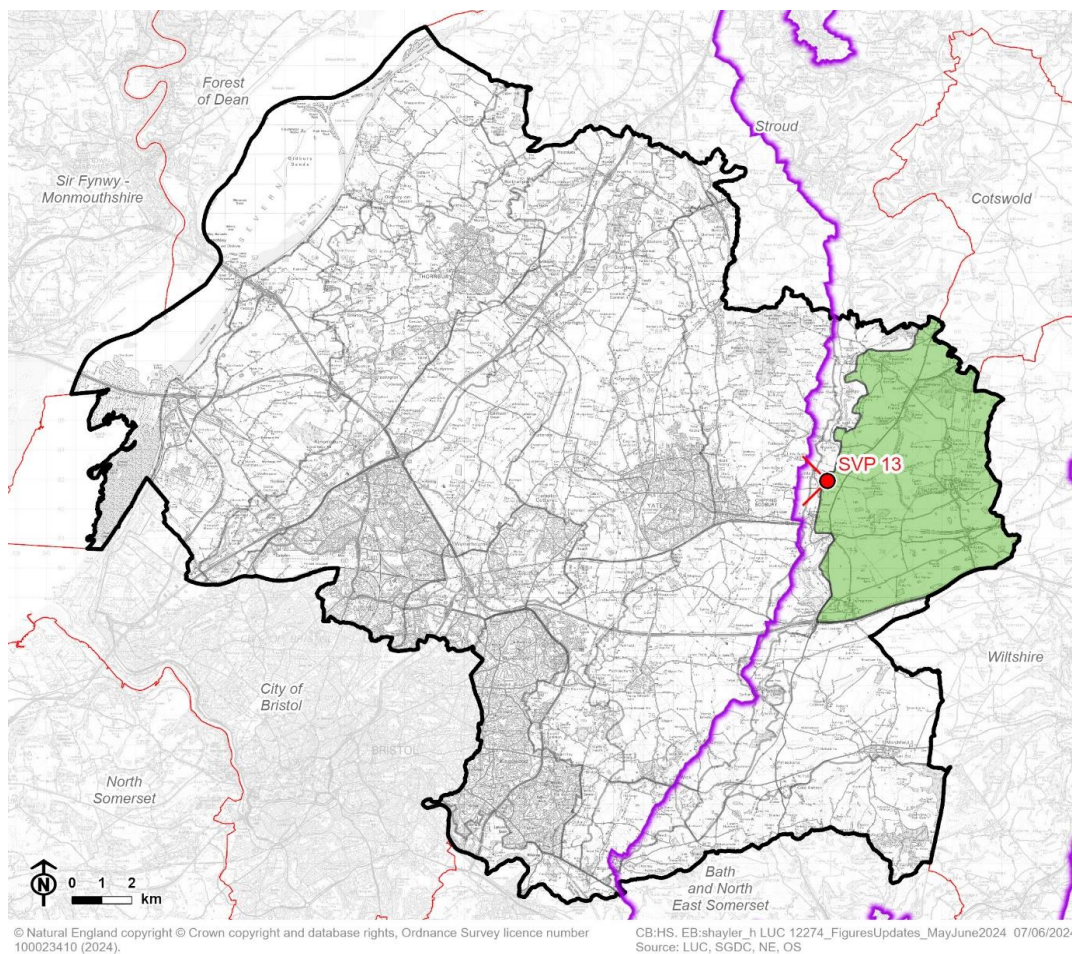
# Contents

<b>Chapter 16</b>	<b>110</b>
Strategic Viewpoint 13: Little Sodbury Hillfort	
Characteristics	115
Summary	116
<b>References</b>	<b>117</b>

# Chapter 16

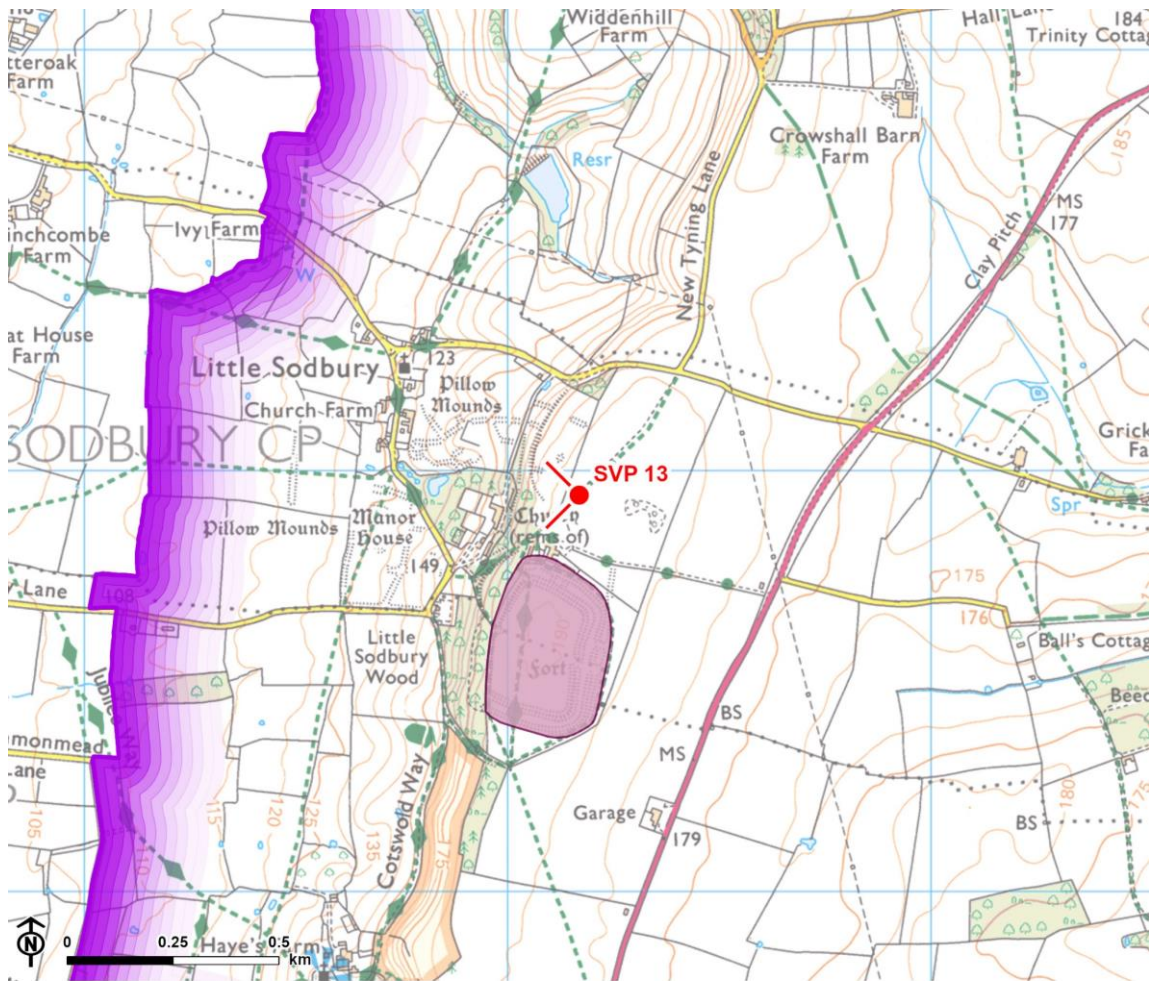
## Strategic Viewpoint 13: Little Sodbury Hillfort

**Figure 16.1: Location of Strategic Viewpoint 13 and landscape character context**





-  Council boundary
-  Neighbouring local authority
-  Cotswolds National Landscape (AONB) boundary
-  LCA 1: Badminton Plateau
-  Strategic viewpoint and angle

Figure 16.2: Detailed map of the location of Strategic Viewpoint 13



© Natural England. © Historic England. Contains Ordnance Survey data © Crown copyright and database rights, Ordnance Survey licence number 100023410, 2024.

-  Council boundary
-  Cotswolds National Landscape (AONB) boundary
-  Scheduled monument
-  Strategic viewpoint and angle



## Viewpoint Information

**Grid reference:** ST 76149 82994

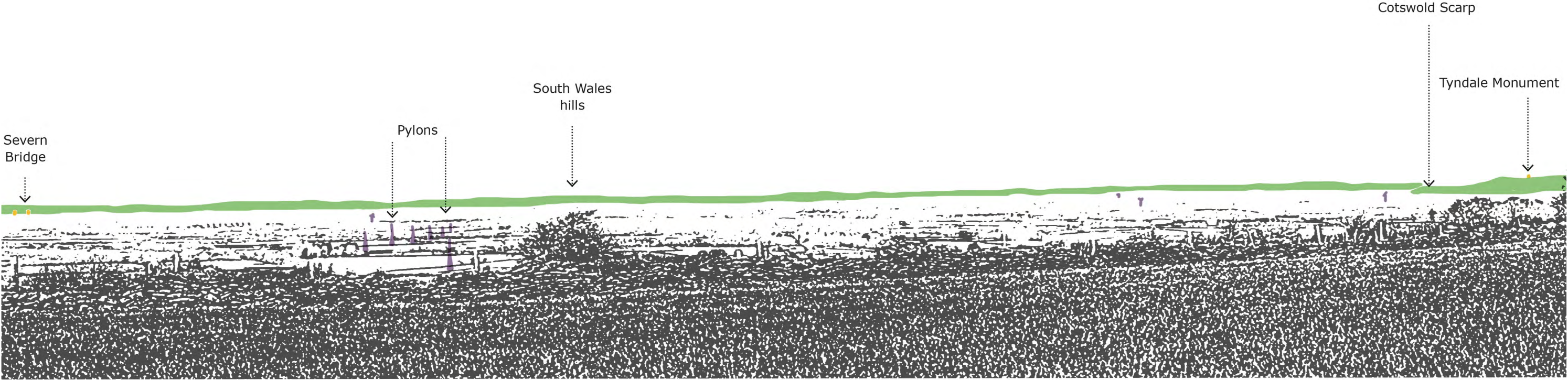
**View location:** Public footpath LSL/11/10, north of Little Sodbury Hillfort.

**View direction:** View north, west, and south across LCA 5: Wickwar Ridge and Vale and along LCA 4: Cotswold Scarp , with glimpsed views east into LCA 1: Badminton Plateau.

**Relationship with Visually Important Hillside (VIH):** The viewpoint is located on the plateau to the east of the Cotswold Scarp VIH and represents views experienced from this VIH.

**Experienced by:** Recreational users along public footpath LSL/11/10.

Figure 16.3: View Composition of Strategic Viewpoint 13



Key landscape feature

Landmark / historic feature

Detractive feature

Figure 16.4: Full Panoramic Photograph of Strategic Viewpoint 13



Strategic Viewpoint 13: Little Sodbury Hillfort



Strategic Viewpoint 13 (continued)



## Characteristics

### Popularity, access and facilities

- Views from this viewpoint are representative of those described in LCA 1: Badminton Plateau, which notes that the *"extensive panoramic views from the Cotswold Scarp, over the lower vale landscapes to the west."*
- Little Sodbury Hillfort is noted on the National Trails website [See reference 1] as an attraction along the route of the Cotswold Way. It is also marked on Google Maps as 'Little Sodbury Hillfort' and is likely to attract many visitors as a result.
- The viewpoint is accessible via public footpath LSL/11/10. The Cotswold Way National Trail runs to the south of the viewpoint, passing across the hill fort and continuing along the ridgeline towards Old Sodbury.

### Relationship with the Cotswolds National Landscape (CNL)

- The viewpoint is located within the CNL and is representative of views provided from the Cotswold Scarp, as well as enabling views within the designated landscape.
- Views from the Cotswold Scarp are considered to be a special quality of the designated landscape, as set out in the CNL Management Plan.

### Quality, value and features of the view

- An elevated viewpoint which provides a panoramic view (180°) from the Cotswold Scarp VIH, over the lower-lying 'vale' landscape to the west (characterised by small-medium irregular shaped mixed fields defined by hedgerows, with mature trees, small woodlands and scattered farmsteads that contribute towards the rural character). There are relatively close glimpsed views

## Chapter 16 Strategic Viewpoint 13: Little Sodbury Hillfort

into the Badminton Plateau to the east, although limited by the gently rising landform.

- The Cotswold Scarp forms a distinctive landform feature in views north, jutting out beyond the treeline in foreground views. The profile of the South Wales hills forms a backdrop in views west, rising above the lower-lying landscape of South Gloucestershire and the Severn Ridges VIH which contains the vale landscape to the west.
- The Tyndale Monument forms a distant landmark feature that is visible on the Cotswold Scarp to the north approximately 13km away, and the Severn Bridge can be seen in long distance views to the west (20km away).
- The viewpoint is located 200m to the north of Little Sodbury Hillfort (a Scheduled Monument), and whilst outward views from the hillfort itself are restricted by woodland, visitors are likely to experience the view from the viewpoint.
- Pylon lines running from north to east, scattered single turbines, as well as distant views of traffic on the M5 motorway, slightly detract from the overall composition of the view.

## Summary

The viewpoint near Little Sodbury Hillfort is categorised as a SVP as it meets most of the criteria to some extent. It is a popular, well known and recorded viewpoint and likely to attract many visitors; it is noted in the South Gloucestershire Landscape Character Assessment as being a natural observation point from which to appreciate the landscape; it is located on a public footpath and near a promoted footpath; it allows an appreciation of the Cotswold National Landscape and provides a notable view from the designated landscape; and it provides a panoramic view that takes in the notable landscape features of the vale, the Severn Ridges, the Cotswold Scarp, and the hills of South Wales, and the landmark features of the Tyndale Monument and Severn Bridge.

## References

# References

- 1 National Trails website 'Cotswold Way attractions' page - Little Sodbury Hillfort. (No date). Available at: [https://www.nationaltrail.co.uk/en\\_GB/attraction/old-sodbury-hillfort/](https://www.nationaltrail.co.uk/en_GB/attraction/old-sodbury-hillfort/)

Report produced by LUC

# Report produced by LUC

## **Bristol**

12th Floor, Colston Tower, Colston Street, Bristol BS1 4XE

0117 929 1997

bristol@landuse.co.uk

## **Cardiff**

16A, 15th Floor, Brunel House, 2 Fitzalan Rd, Cardiff CF24 0EB

0292 032 9006

cardiff@landuse.co.uk

## **Edinburgh**

Atholl Exchange, 6 Canning Street, Edinburgh EH3 8EG

0131 202 1616

edinburgh@landuse.co.uk

## **Glasgow**

37 Otago Street, Glasgow G12 8JJ

0141 334 9595

glasgow@landuse.co.uk

## **London**

250 Waterloo Road, London SE1 8RD

020 7383 5784

london@landuse.co.uk

## **Manchester**

6th Floor, 55 King Street, Manchester M2 4LQ

0161 537 5960

manchester@landuse.co.uk

## **landuse.co.uk**

Landscape Design / Strategic Planning & Assessment

Development Planning / Urban Design & Masterplanning

Environmental Impact Assessment / Landscape Planning & Assessment

Landscape Management / Ecology / Historic Environment / GIS & Visualisation